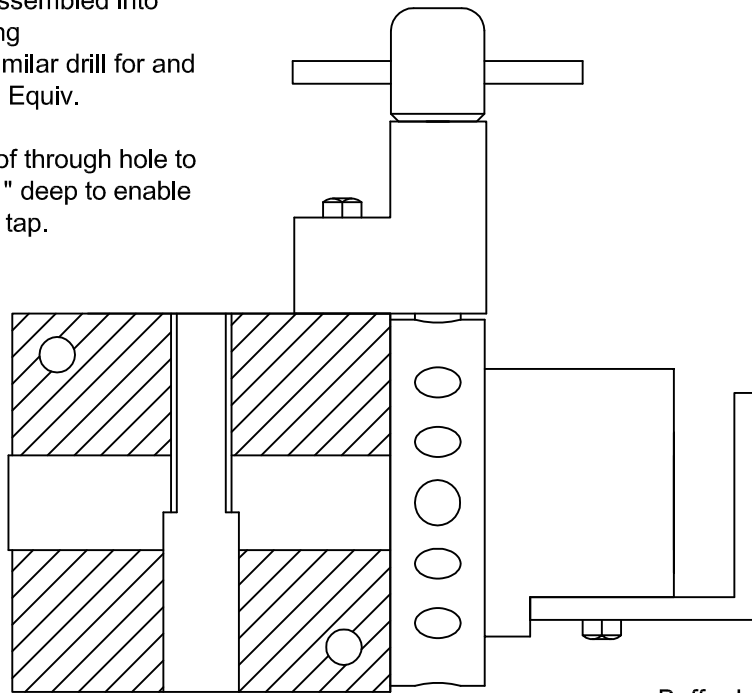
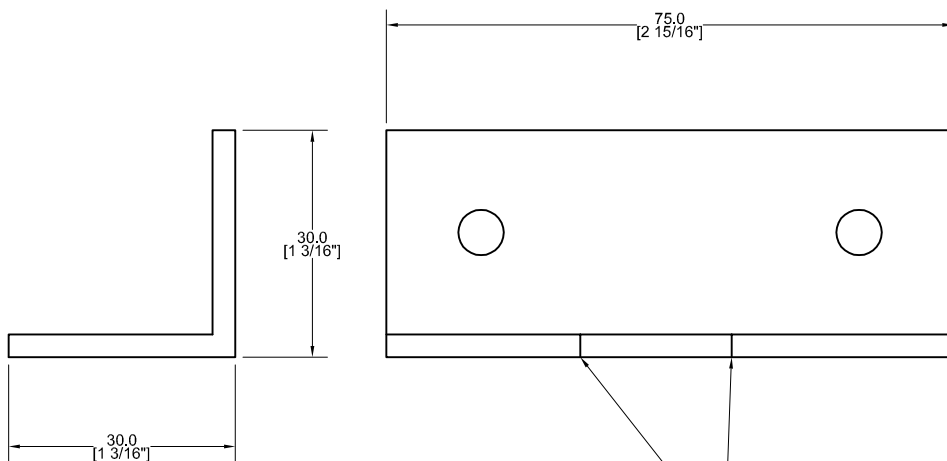


Once spindle is assembled into Raising block using Retainer 603 or similar drill for and tap 8mm. Or Imp. Equiv.

Open lower side of through hole to 9mm for approx 1" deep to enable use of a standard tap.



Buffer beam support bracket attached to hub by two M6 Bolts from below. Take great care to avoid the spindle.



Drill 2 x M6 Clearance for mounting Buffer beam.

2 x M6 Clearance for bracket mounting to hub  
Drill at 20mm centres to miss spindle

## Sheet 5 Assembled Raising Block and Mounting Bracket